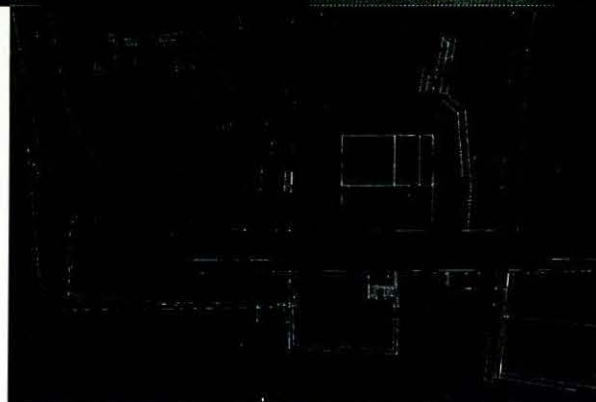


MAX BOSSHARD

CHRISTOPH LUCHSINGER

Two apartments
Dos apartaments

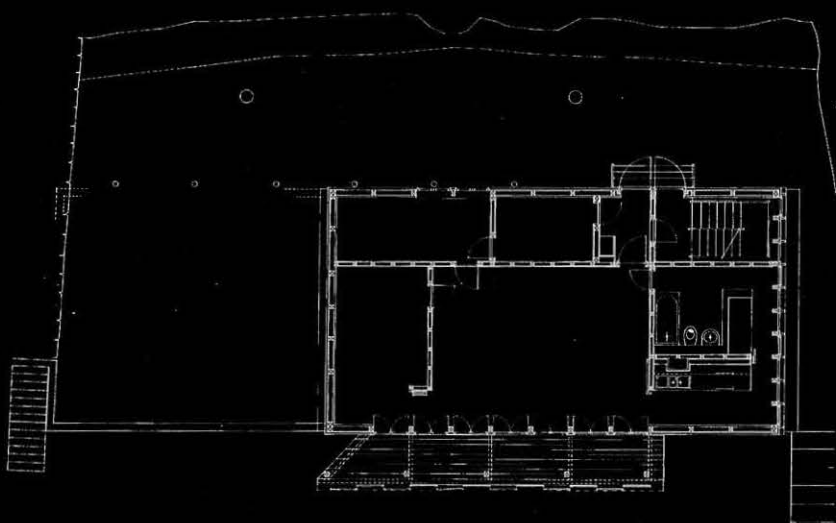


Emplaçament e interior de l'apartament de la planta primera.
Site plan and interior view of the apartment on first floor.

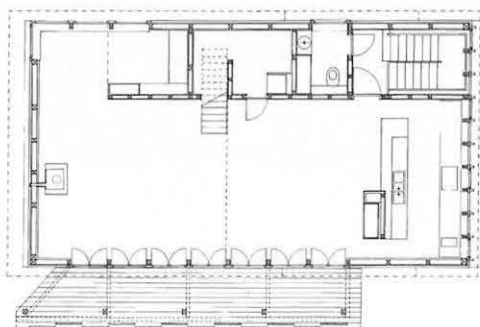


El disseny en secció i en planta del concepte espacial van estar determinats per un emplaçament excepcionalment atractiu, amb una vista directa sobre el llac de Lucerna al sud-oest i els pendents inferiors del mont Rigi al nord-est. Un fonament de formigó, que genera la planta baixa a la banda de la carretera i el soterrani a la banda del Rigi, forma una plataforma artificial al clot rocós deixat per l'edifici que hi havia anteriorment. La construcció lleugera és tota feta de fusta, formada per parets exteriors de càrrega i envans interiors de fusta laminada. Per als forjats es van utilitzar elements prefabricats de fusta alleugerits (*Lignatur*) d'unes dimensions de fins a 8 metres. S'ha utilitzat el làrix per a totes les parts exteriors —el revestiment de la façana de taulons rústics encolats en blocs, les fusteries col·locades des de l'exterior, els finestrons corredissos de la tribuna—, en tots els casos sense tractar. A l'interior, d'altra banda, prevalen les superfícies tintades, emblanquinades i vernissades en verd clar (les parets), vermell i gris (els mobles encastats, les cuines, els banys), negre (el parquet) i blanc (els sostres).

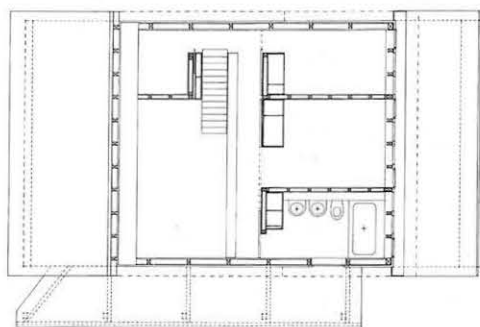
The sectional elevation and the ground-plan of the spatial concept were influenced by the exceptionally attractive site with a free view of Lake Lucerne to the southeast and the lower slopes of Mount Rigi to the northeast. A concrete basement at ground level on the road side of the house and below ground on the Rigi side forms an artificial platform on the rocky building pit left by the previous building. The lightweight construction is of timber throughout. The structural frame consists of outer bearing walls with a continuous series of posts and braced inner walls, all in laminated wood. Wooden hollow box elements (*Lignatur*) of a span of up to 8 metres were used for the ceilings. Larch has been used for all the outer parts —the façade cladding of solid, rough-sawn boards glued into slabs; the windows attached to the bearing construction from the outside; the underside views; the fascia boards; the bearing structure; and the sliding shutters of the veranda— all of which have been left untreated. Inside, on the other hand, there is a prevalence of stained, whitewashed and varnished surfaces in light green (walls), red and grey (built-in furniture, kitchens, bathrooms), black (parquet flooring) and white (ceilings).



Planta baixa (habitatge addicional).
Planta primera i àtic (habitatge principal).
Seccions transversal i longitudinal.
 Ground floor plan (additional apartment).
 First floor and mezzanine plan (main apartment).
 Cross and longitudinal sections.



Tots dos habitatges disposen d'entrades separades, però seria possible connectar-los per l'interior i utilitzar l'edifici com un únic habitatge.
 Both apartments have separate entrances, but it would be possible to connect them internally and use the building as a single residence.



EMPLAZAMIENTO, SITE
Weggis, Suiza
 ARQUITECTOS, ARCHITECTS
Max Bosshard
Christoph Luchsinger
 PROYECTO, DESIGN 1991
 EJECUCIÓN, CONSTRUCTION 1993
 FOTOGRAFÍAS, PHOTOGRAPHS
Heinrich Helfenstein

